



LOT 20 AND PART OF LOT 21
REGISTERED PLAN NO. 1525
CITY OF KITCHENER
REGIONAL MUNICIPALITY OF WATERLOO

LEGEND:

- ENTRANCE / EXIT DOOR
- OH DOOR / DOCK DOOR
- FENCE
- LIGHT-DUTY ASPHALT
- HEAVY-DUTY ASPHALT
- CONCRETE

SITE DATA:

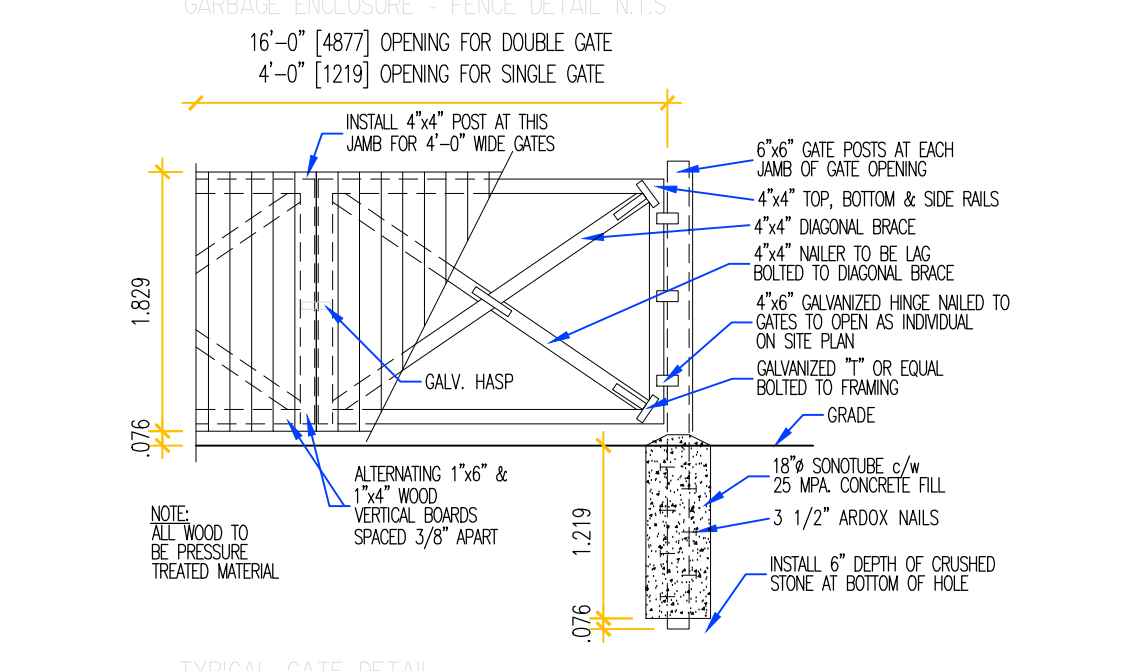
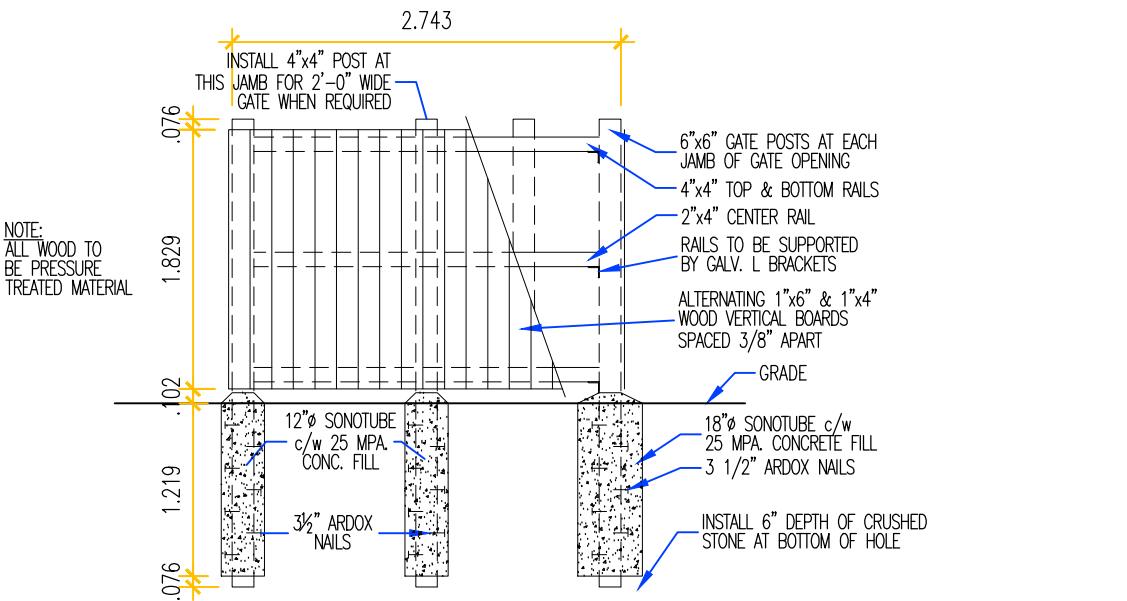
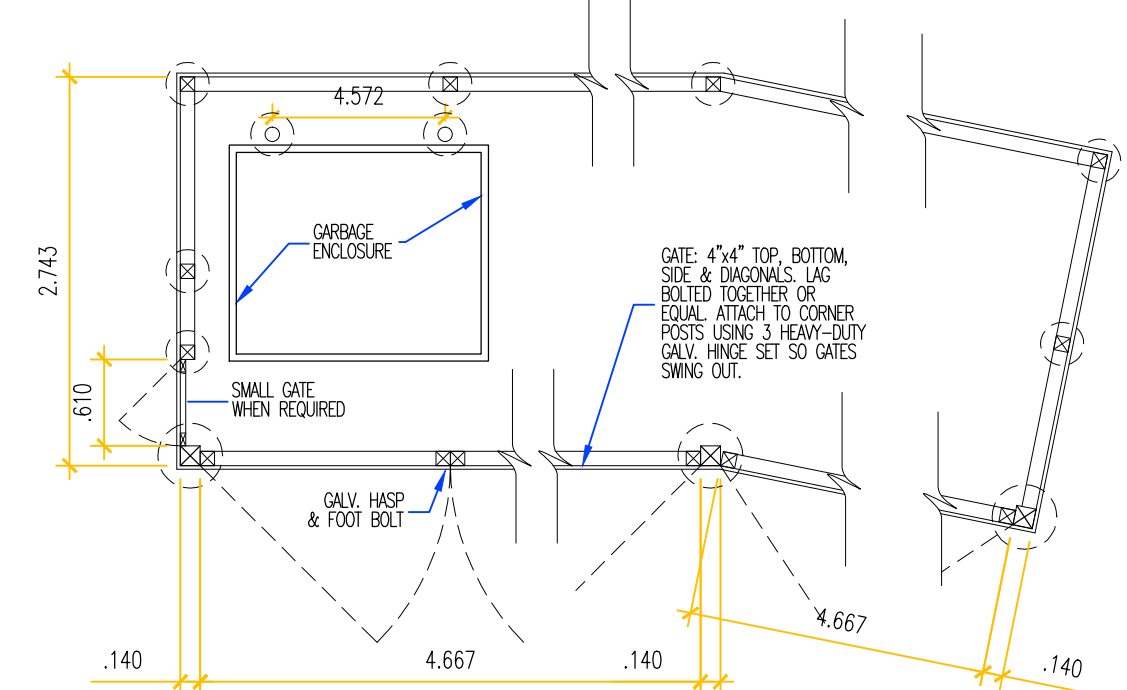
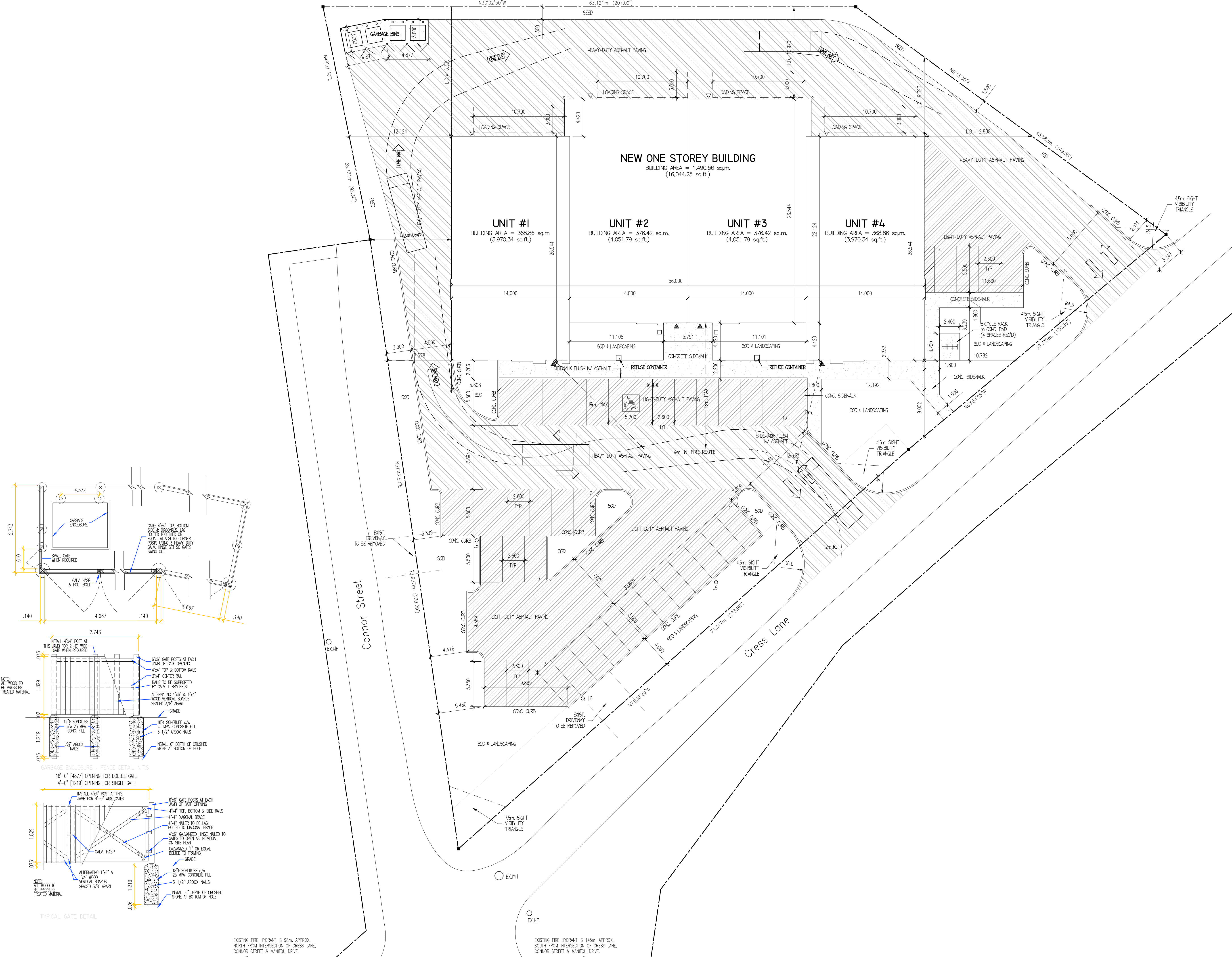
SITE AREA	5,517.49 sq.m.	=	59,399.77 sq.ft.
2014 NEW BUILDING AREA	1,490.56 sq.m.	=	16,044.25 sq.ft. (27.0%)
HEAVY-DUTY ASPHALT	1,625.04 sq.m.	=	17,491.78 sq.ft. (29.5%)
LIGHT-DUTY ASPHALT	958.68 sq.m.	=	10,319.15 sq.ft. (17.4%)
CONCRETE AREA	213.46 sq.m.	=	2,297.66 sq.ft. (3.8%)
SOD & LANDSCAPED AREA	1,011.79 sq.m.	=	10,850.82 sq.ft. (18.4%)
SEEDBED AREA	222.07 sq.m.	=	2,390.34 sq.ft. (4.1%)

PARKING:

PARKING REQUIRED FOR CONTRACTOR/TRADESMAN/RENTAL:
1490.56sq.m. OF GFA = 1 SPACE/ 40sq.m. OF GFA = 38 SPACES
TOTAL PARKING REQUIRED = 38 SPACES INCL. 1 B.F. SPACES
PARKING PROVIDED = 41 SPACES INCL. 1 B.F. SPACES
PARKING SPACE = 2.6m x 5.5m
H.C. PARKING SPACE = 5.2m x 5.5m
LOADING SPACES = 4.3m x 15.0m (INDIVIDUAL)
OR 3.0m x 10.7m (COMMON)

O.B.C. DATA:

BUILDING CLASSIFIED AS GROUP F2
CONFORMING TO SECTION 3.2.2.70
ONE STOREY BUILDING FACING ONE STREET
COMBUSTIBLE OR NON-COMBUSTIBLE CONSTRUCTION PERMITTED
UNSPRINKLERED



EXISTING FIRE HYDRANT IS 98m. APPROX.
NORTH FROM INTERSECTION OF CRESS LANE,
CONNOR STREET & WANTOU DRIVE.

EXISTING FIRE HYDRANT IS 145m. APPROX.
SOUTH FROM INTERSECTION OF CRESS LANE,
CONNOR STREET & WANTOU DRIVE.

NO.	DATE	REVISION

SCHIEDEL
CONSTRUCTION INCORPORATED
GENERAL CONTRACTORS-PROJECT MANAGERS
405 QUEEN ST. W. CAMBRIDGE ONT. N3C 1G6 658-9317
email address: reception@schiedelconst.com

PROJECT
2014 NEW FACILITY
SHELANE PROPERTIES
Cress Lane,
Kitchener, Ontario

SCALE 1:200	DATE Aug./2014	DRAWN BY	PROJECT NO. 2013-
DRAWING SITE PLAN	DRAWING NO. 1		